

Grady Today: 2023

 Grady

Grady's History

- On June 1, 1892 Grady Hospital officially opened. At that time, Grady Hospital had 110 beds and one operating room with an amphitheater for students and staff.
- Grady Health System has grown considerably and now stands as one of the largest public health systems in the United States.
- Grady continues to maintain its commitment to the healthcare needs of the underserved while offering a full range of specialized medical services for all segments of the community.



Grady: An Invaluable Asset



**Industry-leading
Marcus Stroke and
Neuroscience Center**



**Georgia Cancer
Center for
Excellence and
Avon Breast Center**



**911 ambulance service for
Atlanta and South Fulton;
service provider for 16 rural
GA counties**



**State-of-the-art
Correll Cardiac
Center**



**Busiest Level 1
Trauma Center in
Georgia – ACS
Nationally Certified**



**One of the country's
largest infectious
disease programs**



**Nationally
accredited
burn center –
1 of only 2 in
GA**



**World's first 24-hr
comprehensive
sickle-cell center**



**Georgia's only
poison control
center**

High Quality Care for All



MORE THAN

715,000

PATIENT VISITS PER YEAR



153,000+

PATIENTS TREATED IN THE
EMERGENCY DEPARTMENT



GRADY EMS RESPONDED TO
MORE THAN

141,000

911 CALLS



6

GRADY NEIGHBORHOOD
HEALTH CENTERS



25%

OF ALL GEORGIA PHYSICIANS
RECEIVED SOME OF THEIR
TRAINING FROM GRADY



MORE THAN

7,200

EMPLOYEES



GRADY IS THE LARGEST HOSPITAL
IN GEORGIA WITH

953

LICENSED BEDS

Our Caregivers

- Over 1,100 physicians on active medical staff
- Over 800 residents/fellow trained annually
- Numerous Medical and Nursing students educated annually

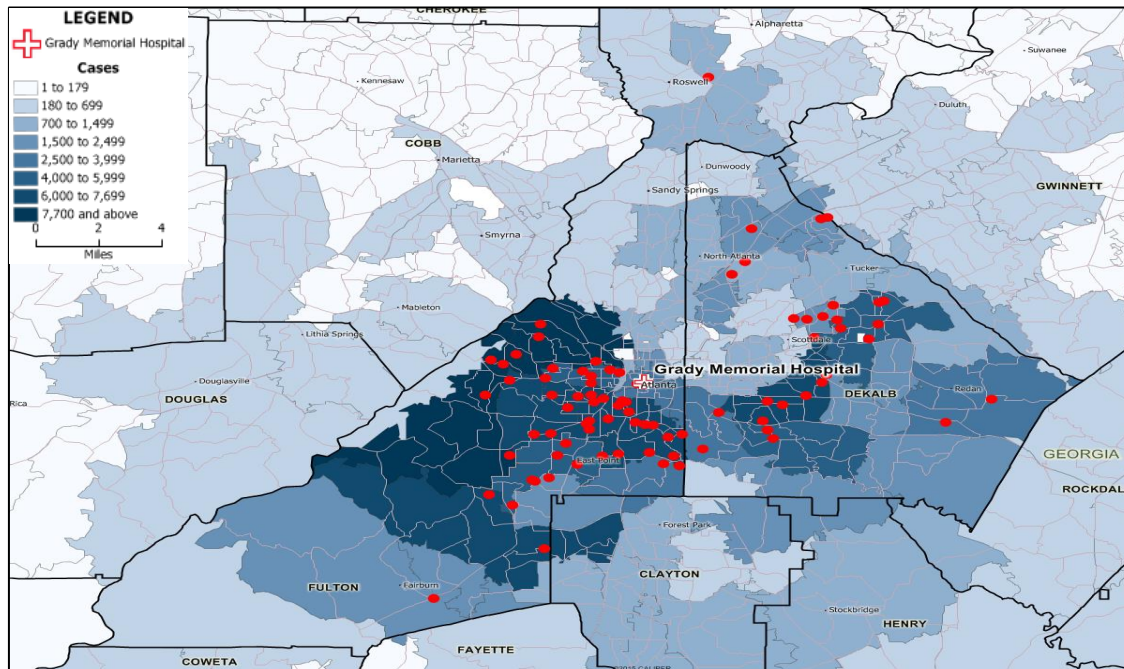
Two Schools of Medicine:



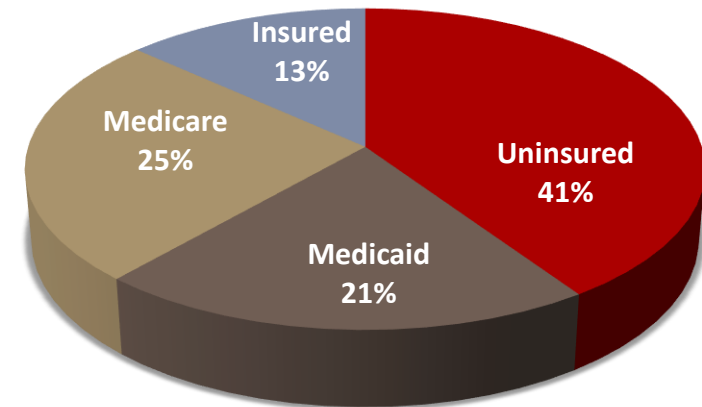
EMORY
UNIVERSITY
SCHOOL OF
MEDICINE

Grady Patients Insurance Status

Patient Origin and Social Vulnerability Index

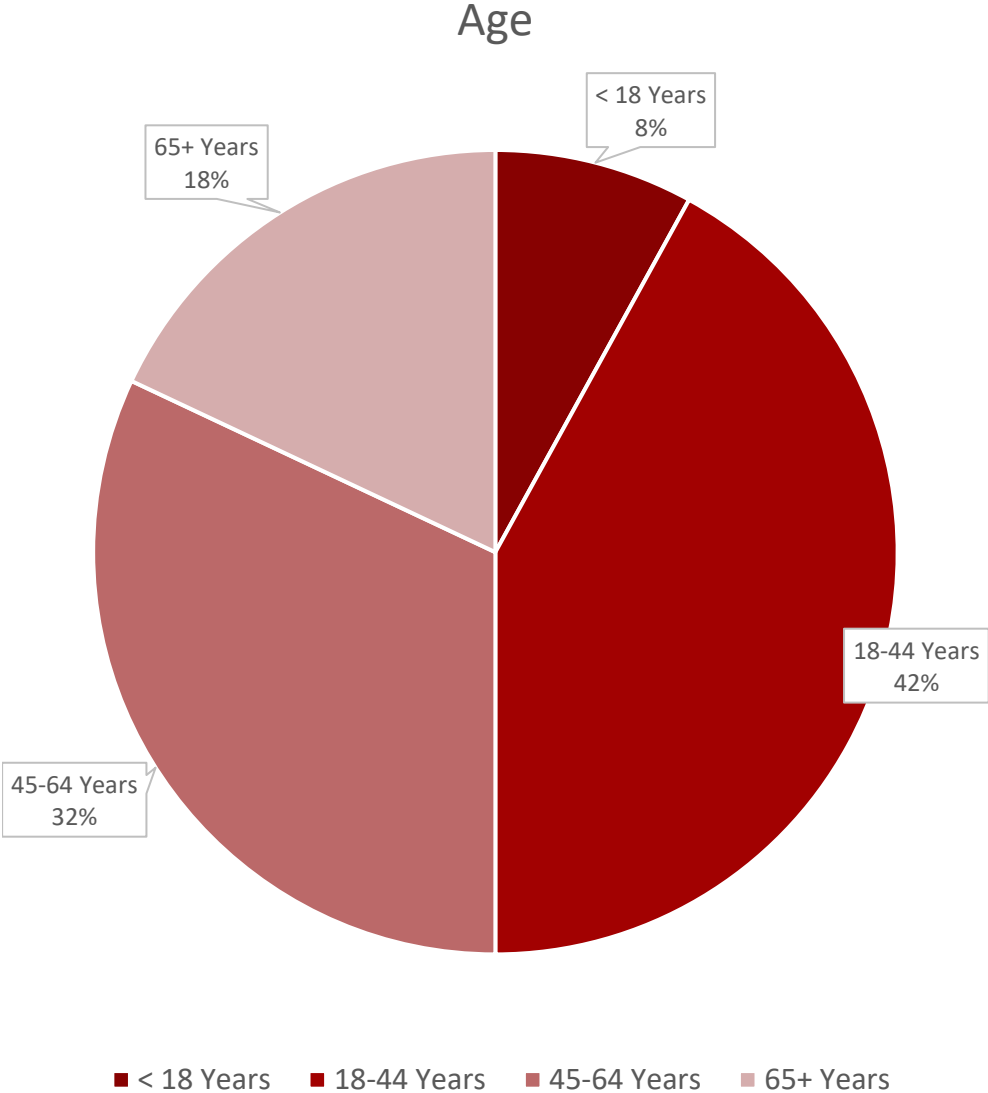


Payor Mix

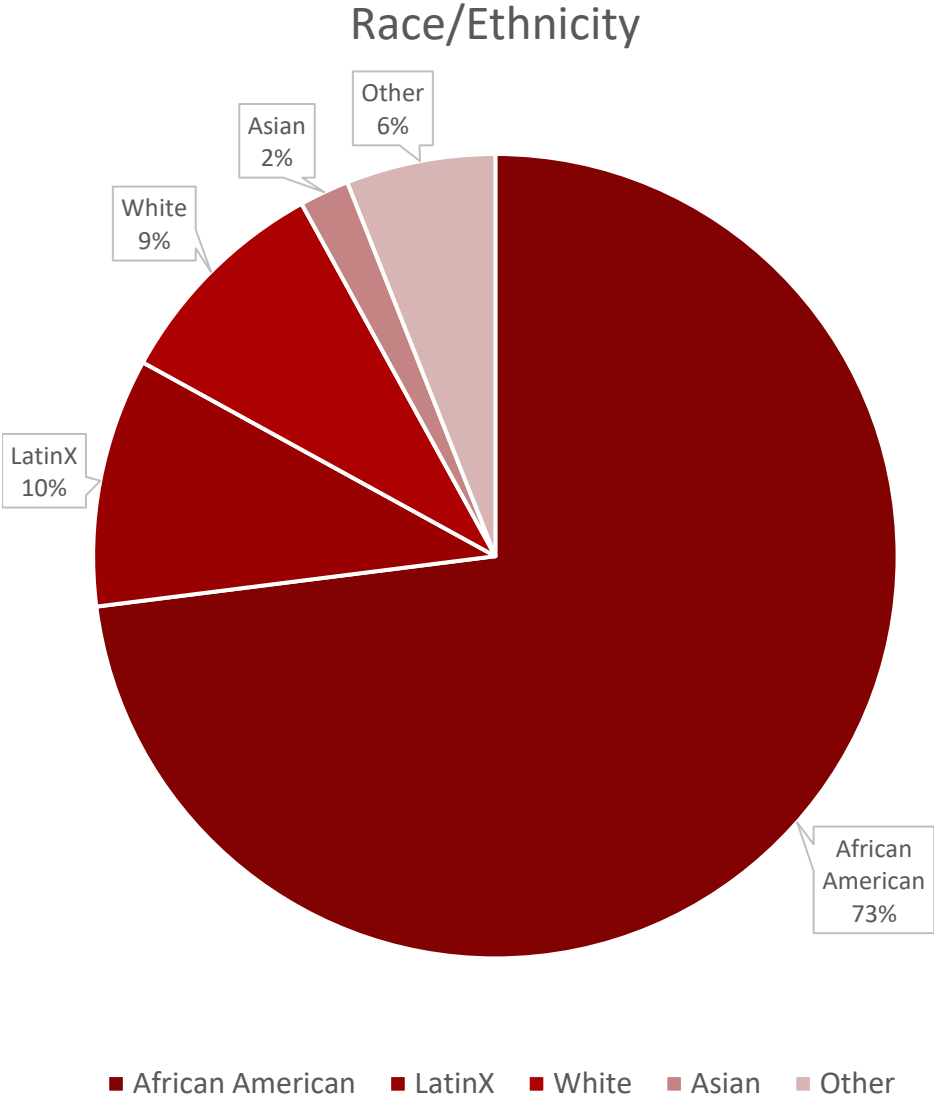


Grady improves health equity. 41% of Grady patients are uninsured, compared to 15.5% in Georgia, and Grady works to ensure everyone has access to care and services to enable equitable outcomes and opportunities.

Profile of Grady Patients: Age



Profile of Grady Patients: Race



**The Social
Determinants
of Health
Impacting
Grady
Patients**

25% experience
financial resource strain

16% experience food
insecurity

10% experience
transportation needs

**Grady:
Improving
the Health
of Fulton
and DeKalb
Counties**

Grady restores patients' abilities to contribute to their communities. The generational impact of these programs magnifies over time. For example, by providing pre- and post-natal care to mothers, Grady reduces maternal mortality, which can help reduce likelihood of adverse childhood experiences.

GA-Advancing Innovation to Delivery Equity

Approved July 25, 2022

- A partnership with the Federal Government that is a “Hospital Directed Payment Program” designed to improve quality of care and outcomes for medically underserved patients served by Grady Health System.
- Core areas of focus in GA-AIDE are:
 - Improving maternal and child health,
 - Preventing and reducing the impact of chronic conditions,
 - Improving access to screening and prevention services, and
 - Advancing health equity.
- Includes a value-based component with payment at-risk, dependent on reaching defined targets on quality measures tied to Georgia’s Quality Plan.

GA-AIDE will result in an additional \$105 million to Grady per year for five-years

Community Expansion

Grady plans to open at least four new community-based Neighborhood Health Centers in 2023 utilizing GA-AIDE funds. Two in DeKalb County and two in Fulton County.

Grady will be purchasing and implementing mobile health units and mobile mammography units to better serve the community

Grady will be increasing the number of community health workers and other health professionals within all Neighborhood Health Centers

The Correll Pavilion: A Public/Private Partnership

Correll Pavilion



Correll Pavilion

Expands Grady's clinic capacity by 45%, increasing patient efficiency, volume and training

Increases total operating room volume by 25% and creates more patient-centered environment

Allows growth in strategic service lines

Diversifies our payor mix to further support our mission

Increases Grady's operating margins ultimately providing financial flexibility for the health system

The State of Grady 2023

The Impact of the Pandemic

2022 was the most negatively impactful year of the pandemic

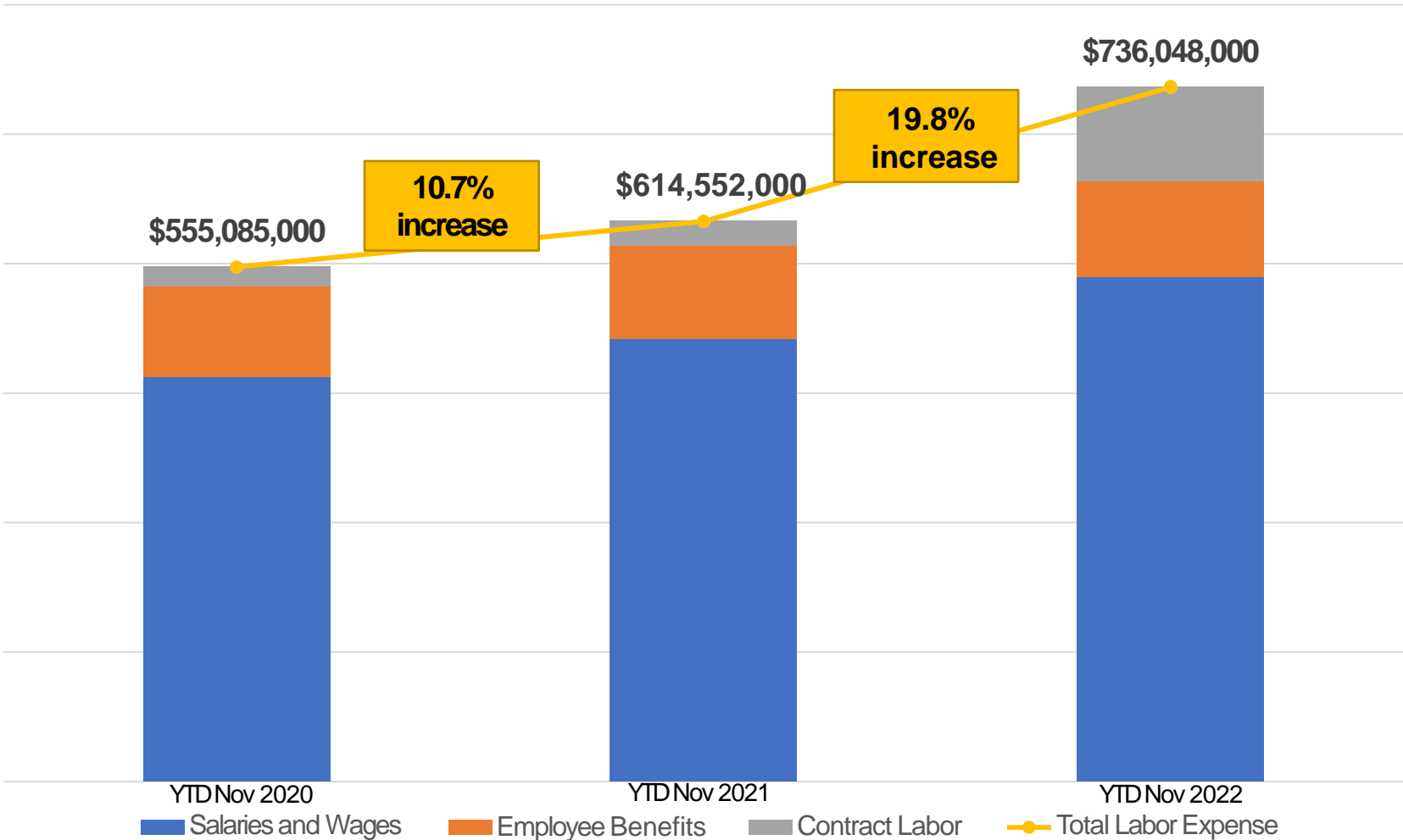
Impact to the healthcare workforce

Unprecedented inflation in wages, medical supplies and pharmaceuticals

Ongoing supply chain issues

Labor Inflation

Compare 11 months 2020, 2021 and 2022



Impact of the Closure of Atlanta Medical Center

Clinical Service	Impact to Volume of Patients
Trauma Volume	Increased 40% - Grady has absorbed 80% of the AMC trauma admissions
Newborn Deliveries	Increased 40% - Lack of Prenatal Care
Neonatal Intensive Care Unit	Increased 50% - Due to Lack of Prenatal Care

Expansion of Inpatient Capacity: The State of Georgia Stepped Up

Grady was awarded a \$130M grant from the State of Georgia to expand bed capacity

Grady will increase total inpatient bed capacity from 712 beds in 2022 to 908 by September 2023 to address existing capacity constraints in addition to the extra volume from AMC's closure

Stable Funding for Grady

Grady is now operating at breakeven.



Grady must generate a minimum of a 3% margin to be sustainable long-term.



There are two options:

Additional funding from Fulton and DeKalb Counties

Medicaid Expansion

