

I-85 BRIDGE COLLAPSE AND RECONSTRUCTION

Bill DuVall, P.E.
Georgia DOT

Adam Grist, Vice President - Structures
C.W. Matthews Contracting Co., Inc.

**Atlanta Business Roundtable
November 16, 2017**

DOT-CAM-143
SR 13/BUFORD HWY AT PIEDMONT



Travel
Video court

FEET

Thu, Mar 30 at 10:58 PM
CAM-143 - SR 13 BUFORD HWY AT PIEDMONT
2017 GDOT - <http://511ga.org>

March 31, 2017









Preserving Substructure

- CWM and DHG
- Cap demo without damaging columns



Reduce, Re-use

- Demolition complete, April 6 - Day 7
- Rebar and concrete transported to recycling facilities





Reduce, Re-use

- Existing bridge foundations re-used
- New columns 1-ft wider than originals
- 13 Columns completed April 11, Day 12

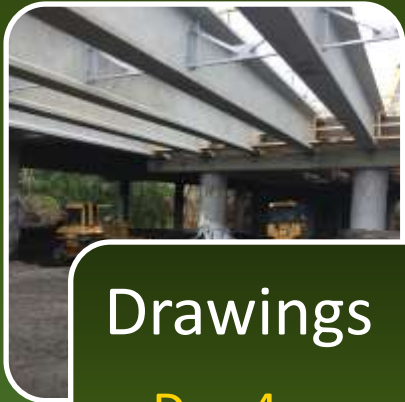


4 New Caps

- Inverted “Tee” Cap
- Field Issues Addressed
- 4 Caps completed
April 17, Day 18

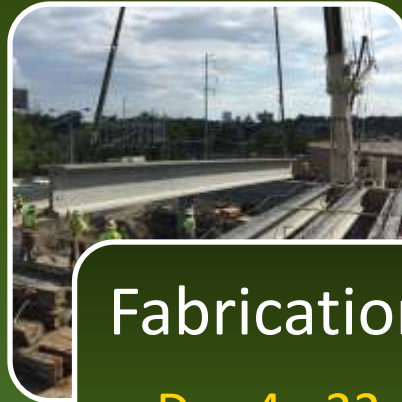


Pre-Stressed Concrete Beams



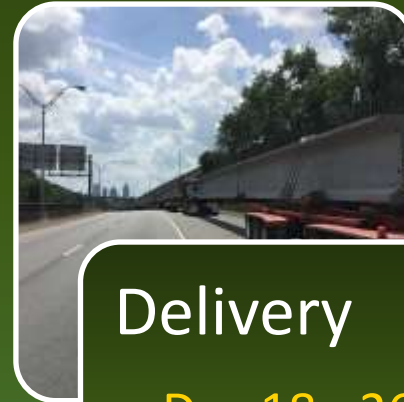
Drawings

- Day 4



Fabrication

- Day 4 - 22



Delivery

- Day 18 - 26

Shipping and Setting Beams

- Specialized trailers haul beams from Standard Concrete (ATL)
- Approach Plan
- 61 Beams Set
April 25, Day 26





13 Columns

4 Caps

61 Beams

6 Spans

45 Days



Opening of I-85

- Northbound May 12, 2017,
Day 43
- Southbound May 13, 2017,
Day 44





Thank You